



◆ THE ◆
SHOWROOM

WASHINGTON, DC

**1099 14TH STREET, NW
WASHINGTON, DC 20005
202.844.6222 | theshowroomdc.com**

VENUE INFORMATION

SPACE FEATURES

- Over 6,000 square feet of open event space (8,300 square feet of total space)
- Private Green Room with two gender neutral restrooms
- Large main floor restrooms with changing stations and plenty of stalls
- Upgraded HVAC system for maximum air flow
- Dimmable overhead lights in multiple zones
- 18 foot ceilings with exposed ductwork
- 600 amps of power distributed throughout the space including ceiling power
- Catering space with water source and multiple power circuits
- Rigging points rated for 1,000 pounds of static weight
- Large windows with privacy blinds
- Venue manager onsite
- Building engineer onsite
- Staff to maintain the restrooms during events

RENTAL RATES & INFORMATION

- \$1,250 per hour for events with under 8 hours
- \$1,000 per hour for events with 8 or more hours
- \$500 per hour for additional hours after 12 hours in one day
- 10% discount for non-profits
- The rental timeframe is from the beginning of load-in until the end of load-out
- Special pricing is available for multi-day events, video and photo shoots
- One-time \$500 administrative fee per event
- Security fees: \$27-\$30 per guard per hour with a 4 hour minimum, contracted directly with Massive Entertainment
- Building Engineer, onsite venue manager and restroom staffing included in the rental fee
- 60% deposit of the estimated contract value is due to secure the venue, the remaining balance is due 30 days prior to event and can be adjusted accordingly if timeframes change. The full rental amount is due if the venue is booked within 30 days of the event date.

ADDITIONAL SERVICES



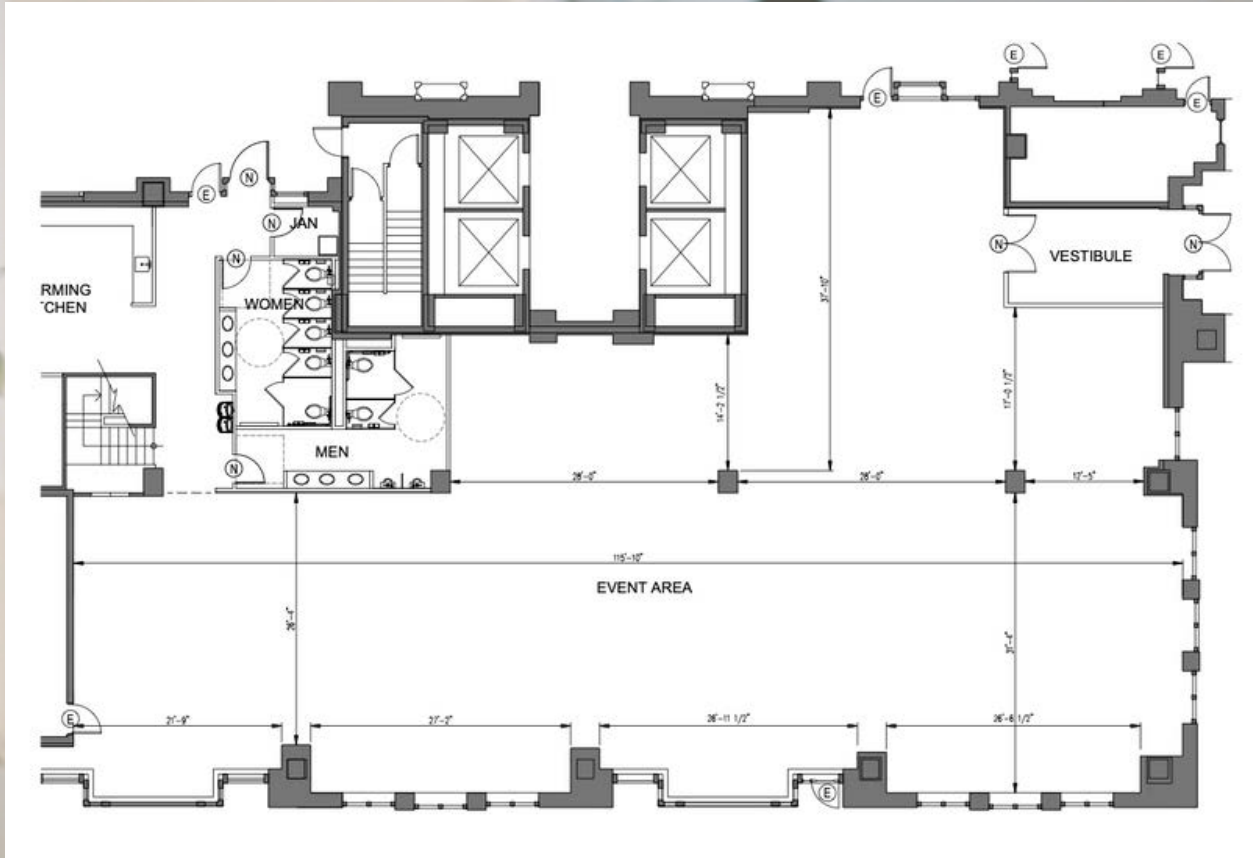
INTERNET

Reliable Internet is one of the most important components of today's live or virtual events and we've partnered with NewConnect to provide fantastic high-speed service at multiple price points to meet any client's needs. Additionally, we provide free WiFi for a limited number of devices so if your event just needs the basics for background music, a photo booth, or check-in, we've got you covered!

SECURITY

In order to ensure the safety of our guests, security guards are required for each event. Massive Entertainment is the exclusive security provider for The Showroom and clients must have one guard in the main space from the beginning of load-in until the end of load-out with additional guards onsite when guests are in the space. The number of guards required for your event will depend on the final scope, flow of the event, number of guests and number of doors that will be open. While security is contracted directly with Massive Entertainment, our staff will work with you to make sure the correct number of guards are scheduled.

FLOOR PLAN



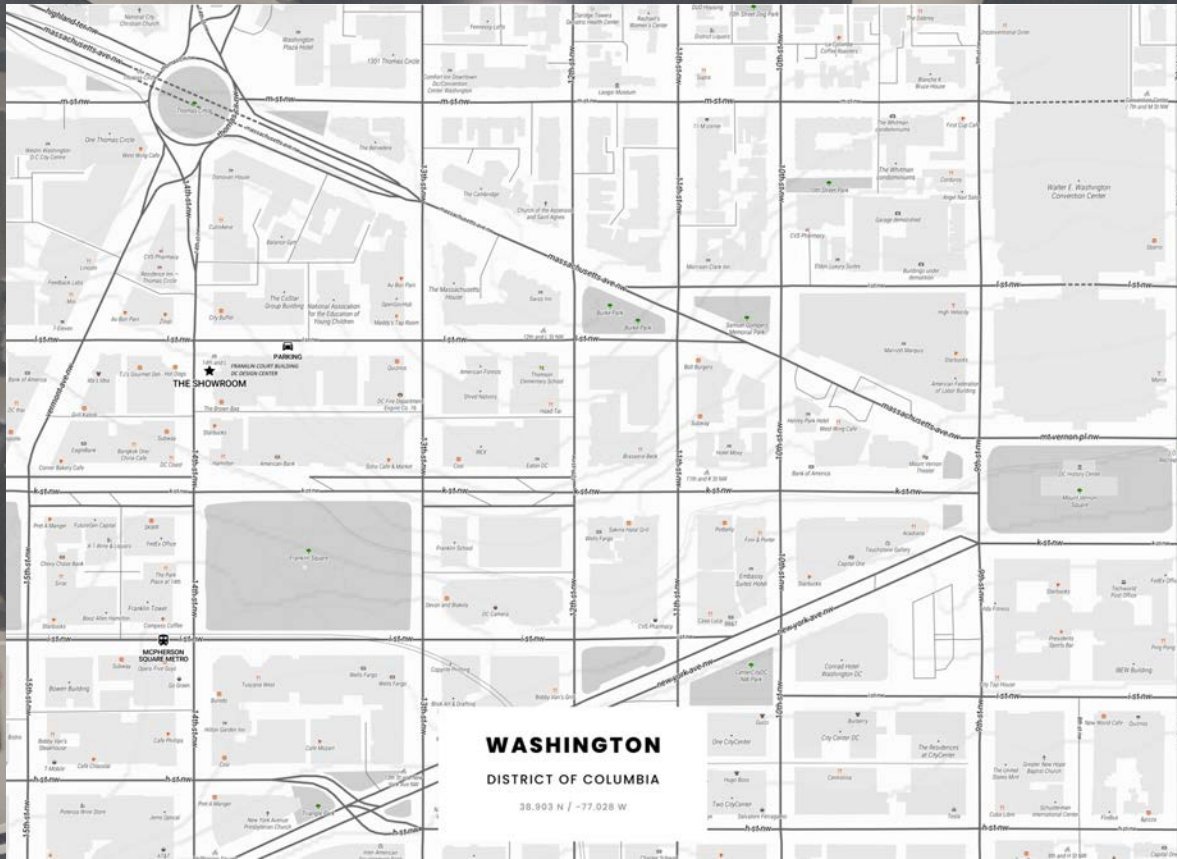
CLICK IMAGE TO ENLARGE

CAPACITIES

- 800 Standing
- 500 Theater
- 280 Rounds



LOCATION

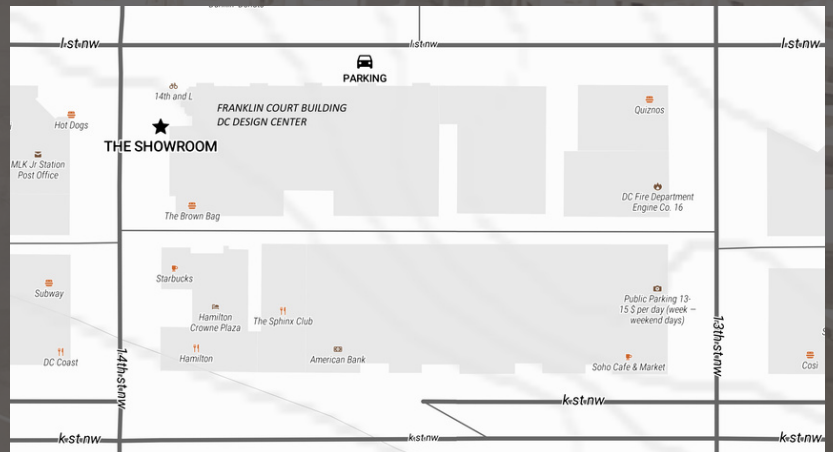


CLICK IMAGES TO ENLARGE

METRO STOPS

Three different stations of the Metro Subway system are within easy walking distance of The Showroom:

- McPherson Square two blocks south (blue, orange, and silver lines)
- Metro Center four blocks south (red, blue, orange and silver lines)
- Farragut North four blocks west (red line)



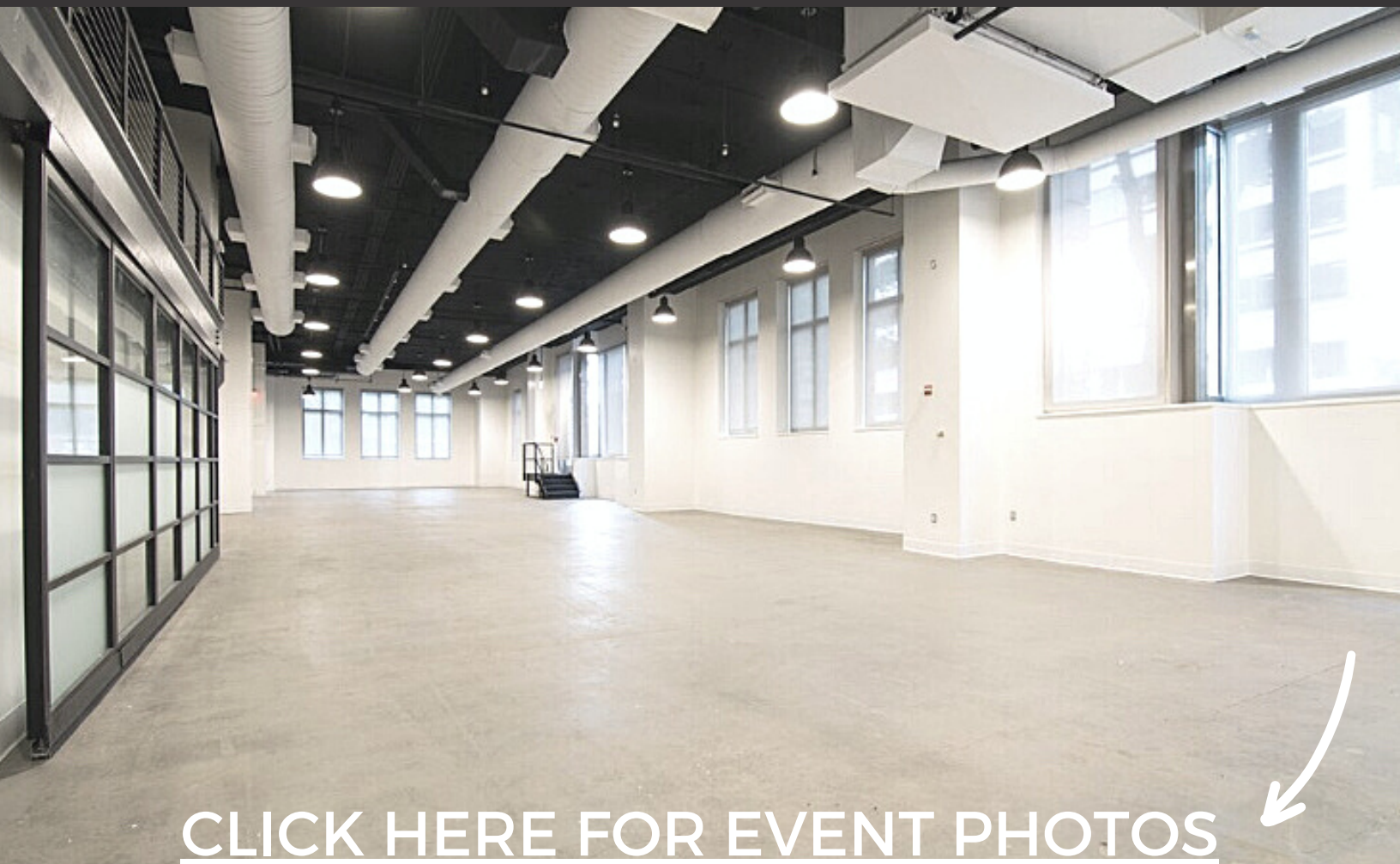
PARKING

Located directly on 14th Street, NW, major Washington, DC thoroughfares provide easy access from all areas of Maryland, Virginia and DC.

The Franklin Court parking garage is located on L Street and has four levels of underground parking with over 425 reserved and unreserved parking spaces. Recently renovated the garage is secure and brightly lit. The parking garage is professionally managed and maintained by Penn Parking and operates from 7am – 7pm M-F. If you would like to have the garage open for your event outside of these hours we can help make those arrangements. Parking after hours and on weekends is \$5 per day and requires additional security guards.



THE SPACE



[CLICK HERE FOR EVENT PHOTOS](#)

VENDORS

We're proud to have a diverse group of experienced vendors on our extensive approved vendor list. Their expert services will save you time, stress, and added expenses.

CATERING

AMPHORA CATERING

Angela Cholakis
P 703-938-3800 x104
acholakis@amphoragroup.com
amphoracatering.com

B. LIN CATERING

Roya Makki
P 202-838-3133 x704
roya@blincatering.com
blincatering.com

DESIGN CUISINE

Abbie Prince
P 703-979-9400
C 703-380-1914
aprince@designcuisine.com
designcuisine.com

GET PLATED

Lisa DeMarie
P 202-480-1852
Lisa@getplateddc.com
getplateddc.com

CATERING

HEIRLOOM CATERING

Vicky Theodorou
P 703-534-0938
hello@heirloomdc.com
heirloomdc.com

OCCASIONS CATERERS

Joel Wolke
P 202-454-7800
C 202-321-4907
JWolke@occasionscaterers.com
occasionscaterers.com

PLEASE BRING CHIPS

Chad Drummond
P 301-873-6278
chad@pleasebringchips.com
pleasebringchips.com

RELISH CATERING

Laura Calderone
P 301-448-9446
lcalderone@relishcateringdc.com

RIDGEWELLS

Mary Margaret
P 864-918-5749
mhart@ridgewells.com
ridgewells.com

RSVP CATERING

Amanda Dearie
P 703-573-8700
C 571-722-1247
abauer@rsvpcatering.com
rsvpcatering.com

SIMPLY FRESH

Buffy Wiltz
P 240-685-2500
Buffy.Wiltz@simplyfresh
events.com
simplyfreshevents.com

SPILLED MILK CATERING

Amit Gulati
P 202-525-6455
amit@spilledmilkcatering.com
spilledmilkcatering.com

CATERING CONT.

SUSAN GAGE CATERING

Abbey Davis
P 301-839-6900
adavis@susangage.com
susangage.com

WELL DUNN

Amy Lewerentz
P 202-543-7878
C 202-431-5009
alewerentz@welldunn.com
welldunn.com

WINDOWS CATERING

Chris Dunn and Andrew Gerstel
P 703-752-9409 | 703-752-9402
Chris Cell 703-928-8599
cdunn@catering.com |
agerstel@catering.com
catering.com

DÉCOR

AMARYLLIS, INC.

Rick Davis
P 202-529-2230
C 202-437-6530
r.davis@amaryllisdesigns.com
amaryllisdesigns.com

DESIGN FOUNDRY

Anne Senatore
P 240-264-1061
C 240-462-3377
annie@foundrycrew.com
foundrycrew.com

HARGROVE, INC.

Mike Proska
P 301-306-4681
C 301-356-7796
mikeproska@hargroveinc.com
hargroveinc.com

REVOLUTION EVENTS

Nicole Frye
P 410-539-7236
nicole@eventrevolution.com
eventrevolution.com



VENDORS

DÉCOR CONT.

FABRICATION EVENTS

P 240-457-4041
victoria@fabricationevents.com
fabricationevents.com

SILVER LININGS DESIGN GROUP

Marielle Shortell
P 301-254-9727
marielle@silverliningdg.com

SOCIAL SUPPLY

Jessica Marie
P 703-200-6237
jessica@socialsupplyevents.com
socialsupplydesign.com

SYZYGY EVENTS INTERNATIONAL

Julie Shanklin
P 301-987-0095
C 240-626-5681
Julie@syzygyevents.com
syzygyevents.com

FLORAL DESIGN

AMARYLLIS, INC.

Rick Davis
P 202-529-2230
C 202-437-6530
r.davis@amaryllisdesigns.com
amaryllisdesigns.com

EDGE

Steve Ornstein
P 301-758-9358
steve@edgeflowers.com
edgeflowers.com

FLOWERS AT 38

Philippa Tarrant
P 202-413-8562
philippa@flowersat38.com
flowersat38.com

FLORAL DESIGN CONT.

SOPHIE FELTS

P 202-689-9123
theteam@sophiefelts.com
sophiefelts.com

SWEET ROOT VILLAGE

Rachel Bridgwood
Lauren Anderson
P 571-206-8016
thevillage@sweetrootvillage.com
sweetrootvillage.com

PLANT RENTAL

PLANTS ALIVE!

Jeff Kushner
P 301-598-3843
kushner@plants-alive.com
plants-alive.com

PLANT FARM RENTALS

Kenneth Tolson
P 301-870-3696
C 301-343-7537
plantfarmrentals@aol.com
plantfarmrentals.com

TWIGZ STUDIOS

Dale Harmon
P 240-483-3540
dale@twigzstudios.com

RENTALS

AFR EVENT FURNISHINGS

Aundrea Hopkins
P 301-362-4300
C 980-201-6197
ahopkins@rentfurniture.com
rentfurniture.com

DC RENTAL

Claudia Gutierrez
P 703-671-7300 x324
C 571-775-2872
cgutierrez@dcrental.com
dcrental.com

RENTALS CONT.

FABRICATION EVENTS

P 240-457-4041
victoria@fabricationevents.com
fabricationevents.com

PARTY RENTAL

Rose Rabin
P 301-931-4580
C 301-370-2547
roserr@partyrentalltd.com
partyrentalltd.com

PERFECT SETTINGS

Liz Waylan
P 202-722-2900
Lwaylan@perfectsettings.com
perfectsettings.com

SELECT EVENT RENTALS

Schuyler Huyck
P 240-832-0208
C 240-832-0208
shuyck@weparty.com
selecteventgroup.com

SOMETHING VINTAGE

Carly Mendiola
Lauren Rodriguez
P 202-596-8445
info@somethingvintage
rentals.com
somethingvintagerentals.com

WHITE GLOVE RENTALS

Jennifer Anglada
P 443-567-5157
C 443-413-7619
hello@whiteglove-rentals.com
whiteglove-rentals.com

LIGHTING

ATMOSPHERE LIGHTING

Jay Snyder
P 301-585-2100
C 301-440-0963



VENDORS

LIGHTING CONT.

CREATIVE SOUND AND LIGHTING

Marshall Gwyn
P 336-899-7635
C 336-688-6105
marshall@creativesoundandlighting.com
creativesoundandlighting.com

DAN GOLDMAN EVENTS

Dan Goldman
P 202-215-3655
djdangoldman@gmail.com
dangoldmanevents.com

DIGITAL LIGHTNING

Alysha DiGiorgio
P 301-987-0511
C 301-910-0732
diglight@aol.com
digitallightning.com

EVENT EQ

BJ Singh
P 410-242-5050 x101
C 703-585-4860
bjsingh@eventeq.com
eventeq.com

EXTRAORDINARY ENTERTAINMENT

Andrew Robinson
P 301-788-6434
andrew@bookextraordinary.com
bookextraordinary.com

FROST LIGHTING

Fred Elting
P 703-550-7707
C 703-675-3870
frede@frostdc.com
frostdc.com

SUMMIT EVENT PRODUCTIONS

Bryan Bronlow
P 202-431-7817
bryan@summiteventpros.com
summiteventpros.com

AV/SOUND

CREATIVE SOUND AND LIGHTING

Marshall Gwyn
P 336-899-7635
C 336-688-6105
marshall@creativesoundandlighting.com
creativesoundandlighting.com

DAN GOLDMAN EVENTS

Dan Goldman
P 202-215-3655
djdangoldman@gmail.com
dangoldmanevents.com

EMT PRODUCTIONS

Jeff Monner
P 703-349-1722
C 703-850-7091
jeff@emtproductions.com
emtproductions.com

EVENT EQ

BJ Singh
P 410-242-5050 x101
C 703-585-4860
bjsingh@eventeq.com
eventeq.com

EXTRAORDINARY ENTERTAINMENT

Andrew Robinson
P 301-788-6434
andrew@bookextraordinary.com
bookextraordinary.com

FUTUREVIEW

Bill Goodwin
P 202-607-0460
bill.goodwin@futureview.com

NOMAD

Matt Fisher
P 703-354-2939
C 703-354-2939
mfisher@nomadevents.com
nomadevents.com

PM1

David Plevan
P 888-476-1776
C 202-997-1748
Plevan@pm1pro.com
productionmanagementone.com

AV/SOUND CONT.

POTOMAC SOUND

Andrew Roberts
P 301-332-6111
C 301-332-6111
andrew@potomacsound.com
potomacsound.com

RCI SYSTEMS

Dave Ballenger
P 301-931-9001 x206
C 301-674-4722
davidb@rcisystems.com
rcisystems.com

SHOWCALL

Jaime Prine
P 202-443-7000
jaime@showcallinc.com
showcallinc.com

SPARK STREET DIGITAL (webcasts, etc.)

Paul Selker
P 617-429-7276
paul@sparkstreetdigital.com

WASHINGTON TALENT AGENCY

P 301-762-1800
info@washingtontalent.com
washingtontalent

SECURITY

MASSIVE ENTERTAINMENT

Lance Hogan
P 301-728-1137
lhogan.269@gmail.com
massiveusa.com

BULK TRASH / CLEANING

J&D SERVICES, LLC

John E. Koch III
P 301-873-6307
janddservicesllc@yahoo.com

VALET

MJ VALET

Michael Jasser
P 202-905-8987
mjasser@mjvalet.com
mjvalet.com

